

# DC charger 30kW



Charging stations



EV dealers



Fleets



Commercial areas

The 30kW DC charger is a DC charge station with a medium speed  
Slim DC charger installed to the wall for small space  
Charge for any CCS vehicle  
Safe and intuitive to use  
Wall-mounted or Stand type



## Key Features

- Networked or Non Networked charger
- Remote monitoring and control
- Fits all CCS vehicles
- Front and side doors can be opened for maintenance
- Charging time : 2hours  
(When 70kWh battery 20% → 80% charge)
- Easy installation and minimal maintenance
- Advanced service support
- Remote update for optimal operation

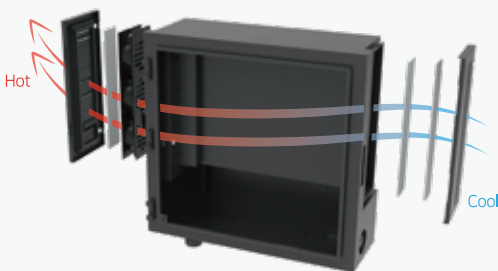
## DC charger 30kW at a glance



# Specifications

|                        |                                  |   |
|------------------------|----------------------------------|---|
| <b>General</b>         | Connector                        | CCS   |
|                        | Communication with EV            | IEC 61851 PLC   |
|                        | Display                          | 12.1" LCD Display, Touch screen   |
|                        | Support language                 | English (Other languages available upon request)  |
|                        | Push buttons                     | 1 emergency stop button   |
|                        | User authentication              | ISO/IEC 1443 A / B Mifare RFID reader, Credit card reader   |
| <b>Electric</b>        | Input                            | 3Ø4W, 400VAC, 50/60Hz, Max.33kVA (CE Version)<br>3Ø4W, 480VAC, 60Hz, Max.33kVA (UL Version)                     |
|                        | Input   THD                      | < 5%  |
|                        | Output                           | Voltage : 150~1,000VDC(Max)<br>Current : 80A(Max)<br>Max power : 30kW   |
|                        | Power factor                     | > 0.96 (Full Scale)   |
|                        | Charging mode                    | CC, CV  |
|                        | Voltage accuracy                 | ±1.0% (Full Scale)  |
|                        | Current accuracy                 | ±1.0% (Full Scale)  |
|                        | Max. efficiency                  | > 94% (at rated voltage, rated current)   |
|                        | Isolation impedance              | 10MΩ@1,000V   |
|                        | <b>Environment</b>               | Operating temperature   |
| Humidity               |                                  | < RH95% (Non-condensing)  |
| <b>Communication</b>   | Network interface                | Ethernet, Cellular, WLAN  |
|                        | Protocol                         | OCPP1.6   |
| <b>Safety standard</b> | Protection                       | Over voltage, Over current, Short-circuit, Over temperature, Earth leakage, Surge protection, Contactor welding |
| <b>Mechanical</b>      | Protection degree                | IP54 (NEMA 3R), IK10  |
|                        | Cooling                          | Forced air  |
|                        | Charging cable length (Standard) | 6m (19.7ft)   |
|                        | Dimension                        | 650(W) x 622.4(H) x 325.1(D) mm (25.6(W) x 24.5(H) x 12.8(D) inch)  |
|                        | Weight                           | 91kg (200lb)  |

## Feature highlights



Advanced internal design creates airflow between power modules to solve heat generation problem



Front and side doors can be opened for maintenance



Can also be installed on walls or stand poles